

SUN2000L COMMISSIONING GUIDE EU



Huawei Technologies Co. Ltd.

Version	Created by	Date	Remarks
03	a84093577	21.09.2018	Firmware V321 and NetEco

The information in this document may contain predictive statements including, without limitation, statements regarding the future financial and operating results, future product portfolio, new technology, etc. There are a number of factors that could cause actual results and developments to differ materially from those expressed or implied in the predictive statements. Therefore, such information is provided for reference purpose only and constitutes neither an offer nor an acceptance. Huawei may change the information at any time without notice.

This document describes the steps for commissioning the SUN2000L inverters. The mobile phone application used for commissioning the SUN2000L is called FusionHome app (app for short), which communicates with the SUN2000L over Wi-Fi to provide a convenient platform for querying alarms, configuring parameters and performing routine maintenance.

After the DC and AC side of the SUN2000L is energized you can start the commissioning procedure.

The steps in this guide are applicable for firmware version SUN2000LV100R001C00SPC321.

The steps in this document are applicable for a fresh FusionHome APP install and for a first SUN2000L inverter startup. If it's not the first time and you find that the steps are not easy to follow, please reinstall FusionHome APP and reset the inverter to default settings (disconnect and connect AC and DC 2 times within 3 minutes. After the reset, all 3 LEDs on the inverter's cover will glow yellow for 2 seconds.)

Procedure

1. Downloading and install the FusionHome APP

Search for **FusionHome** in one of the following app stores, download the installation package, and install the FusionHome App by following the instructions.

- Play Store (Android)
- App Store (iOS)
- Huawei App Store (Android)

After the app is installed, the FusionHome icon is displayed on the home screen.



Troubleshooting:

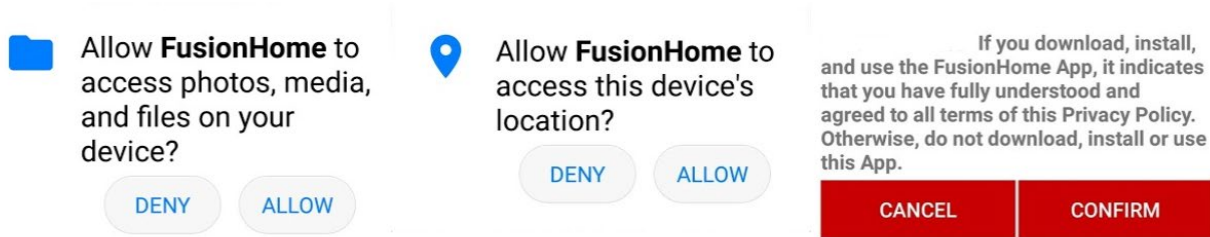
If you can't find the app in your Play Store/App Store, please make sure that you've written FusionHome in one word.

On Android phones, the OS version of the phone must be at least 4.4 (Kit Kat), otherwise the app is not compatible with that phone.

2. FusionHome APP permissions

When FusionHome app is opened for the first time you'll be asked to allow the the app to use the following resources:

- Photos, media and files – Needed to store firmware files and other resources
- Device's location – Needed to automatically set the **Grid Code** for your country
- Accept Privacy Policy



Troubleshooting:

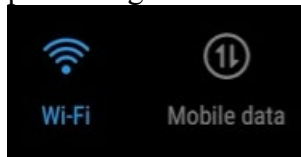
If the access to photos, media and files is denied, the app won't work correctly and won't be able to connect to the inverter's Wi-Fi.

If the access to device's location is denied, the app won't work correctly and won't be able to connect to the inverter's Wi-Fi.

If the Privacy Policy is not accepted, the app will shut down.

3. Connecting to the SUN2000L

3.1 Turn ON Wi-Fi on your phone (recommended is to turn OFF mobile data because your phone might switch networks since the inverter's Wi-Fi doesn't offer access to internet).



Troubleshooting:

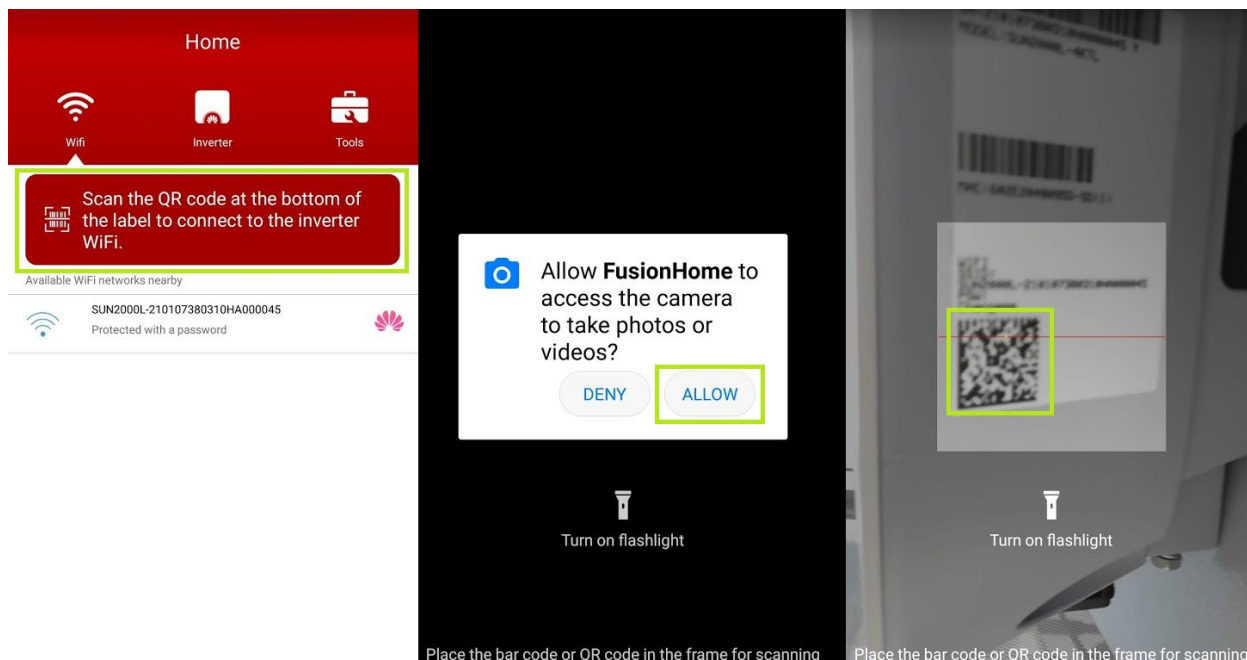
If both, Wi-Fi and Mobile Data are turned on, you can connect to the inverter via Wi-Fi and access the internet via mobile data, only if the phone is able to work in dual mode.

3.2 Connect to the SUN2000L's Wi-Fi

3.2.1 Method 1

- 1) Tap on "Scan the QR code at the bottom of the label to connect to the inverter Wi-Fi"
- 2) Allow app to use phone's camera.
- 3) Point the camera to the QR code.

In this way, your phone will automatically connect to the inverter's Wi-Fi.



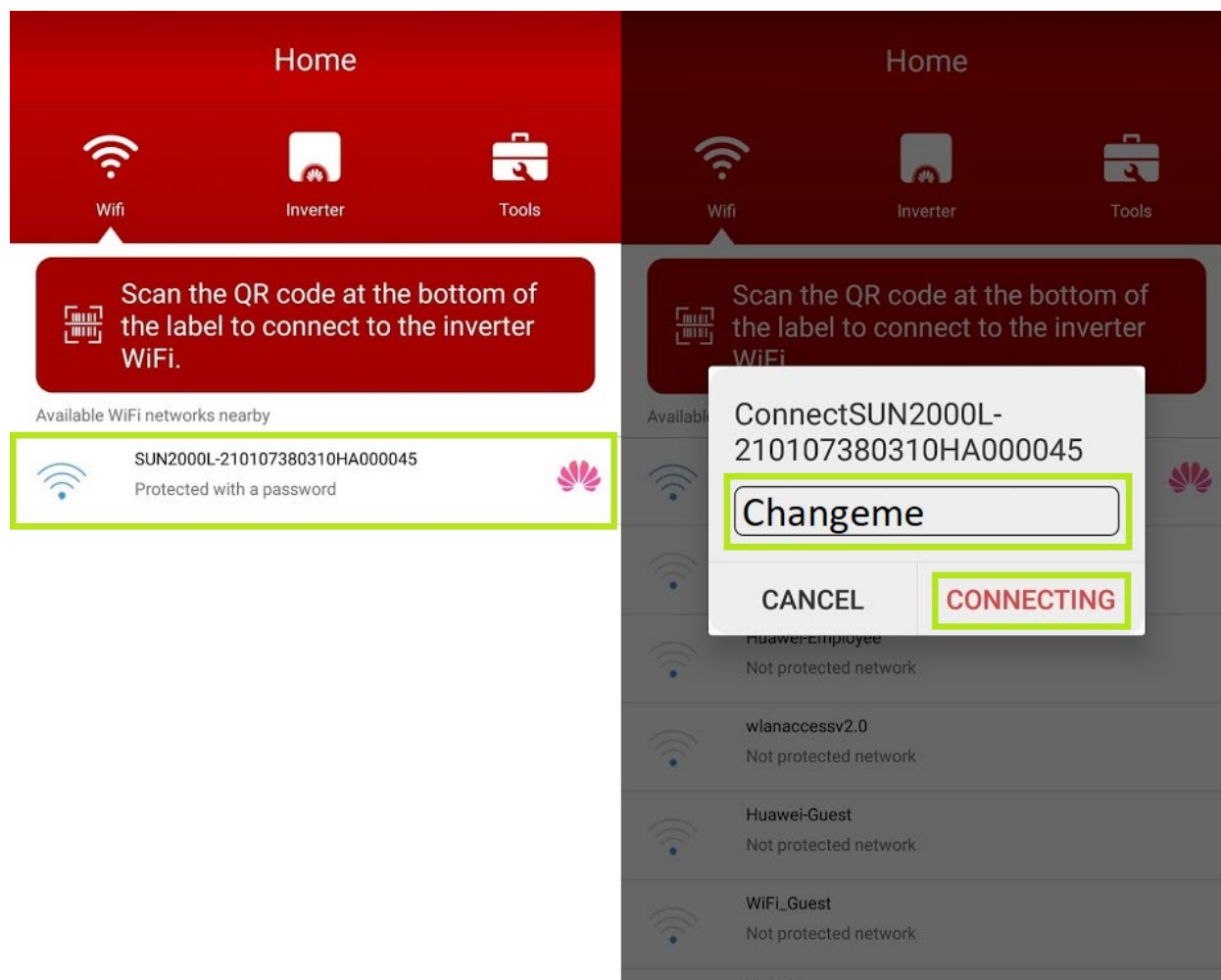
3.2.2 Method 2

If method 1 didn't work, please try it in this way.

- 1) Tap on the inverter's Wi-Fi SSID in the APP
- 2) Enter the password "Changeme"
- 3) Tap on Connect

The name of the connected SUN2000L WiFi network is represented by **SUN2000L-its serial number (SN)**. The SN is available on the label attached to the side of the SUN2000L.

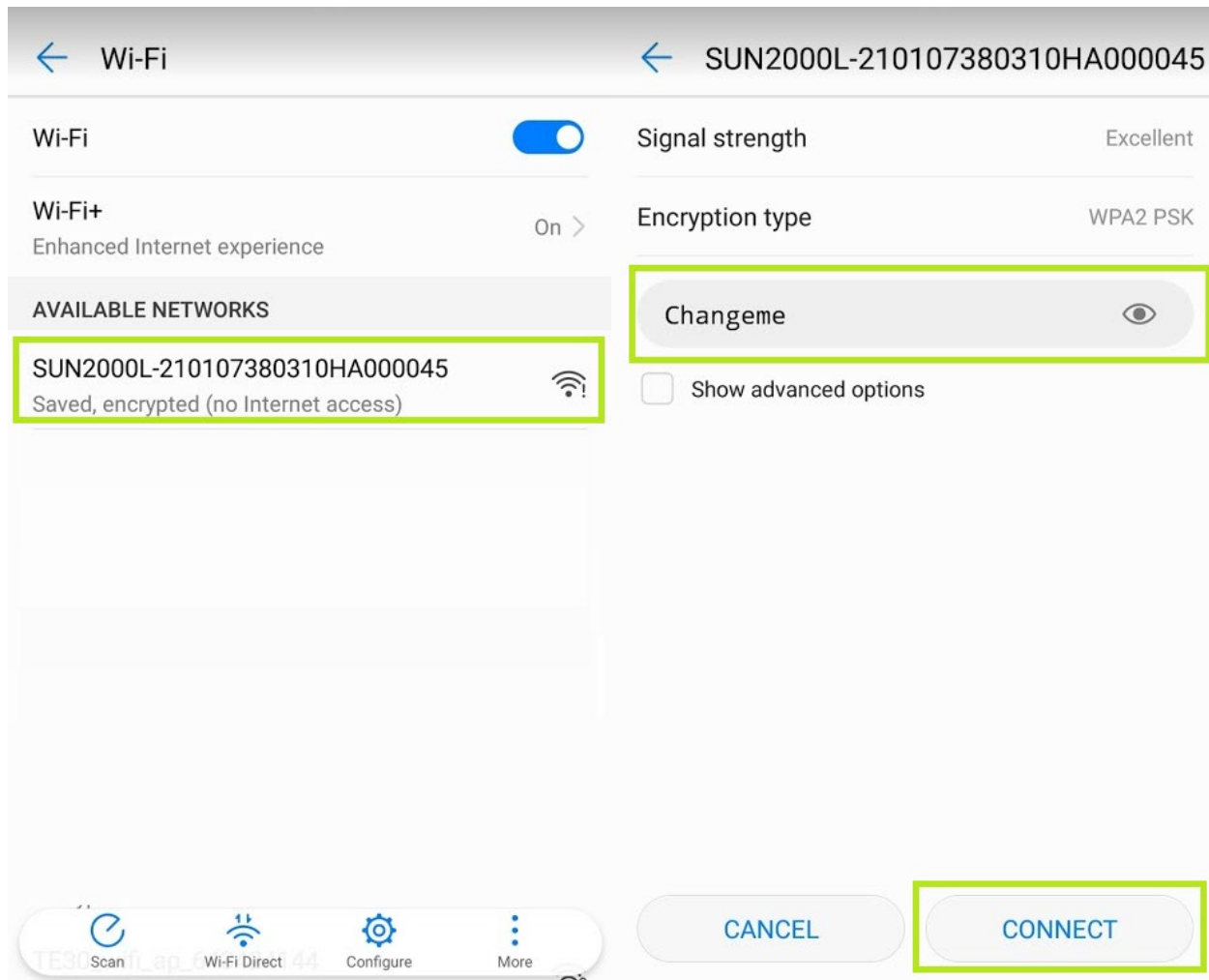
- Use the initial password **Changeme** upon first login. To ensure account security, change the password immediately after login.



3.2.3 Method 3

If method 1 and 2 didn't work, please try it in this way.

- 1) Go to Phone's Settings > Wireless > Tap on SUN2000L Wi-Fi
- 2) Enter password "Changeme"
- 3) Tap on "Connect"



Troubleshooting:

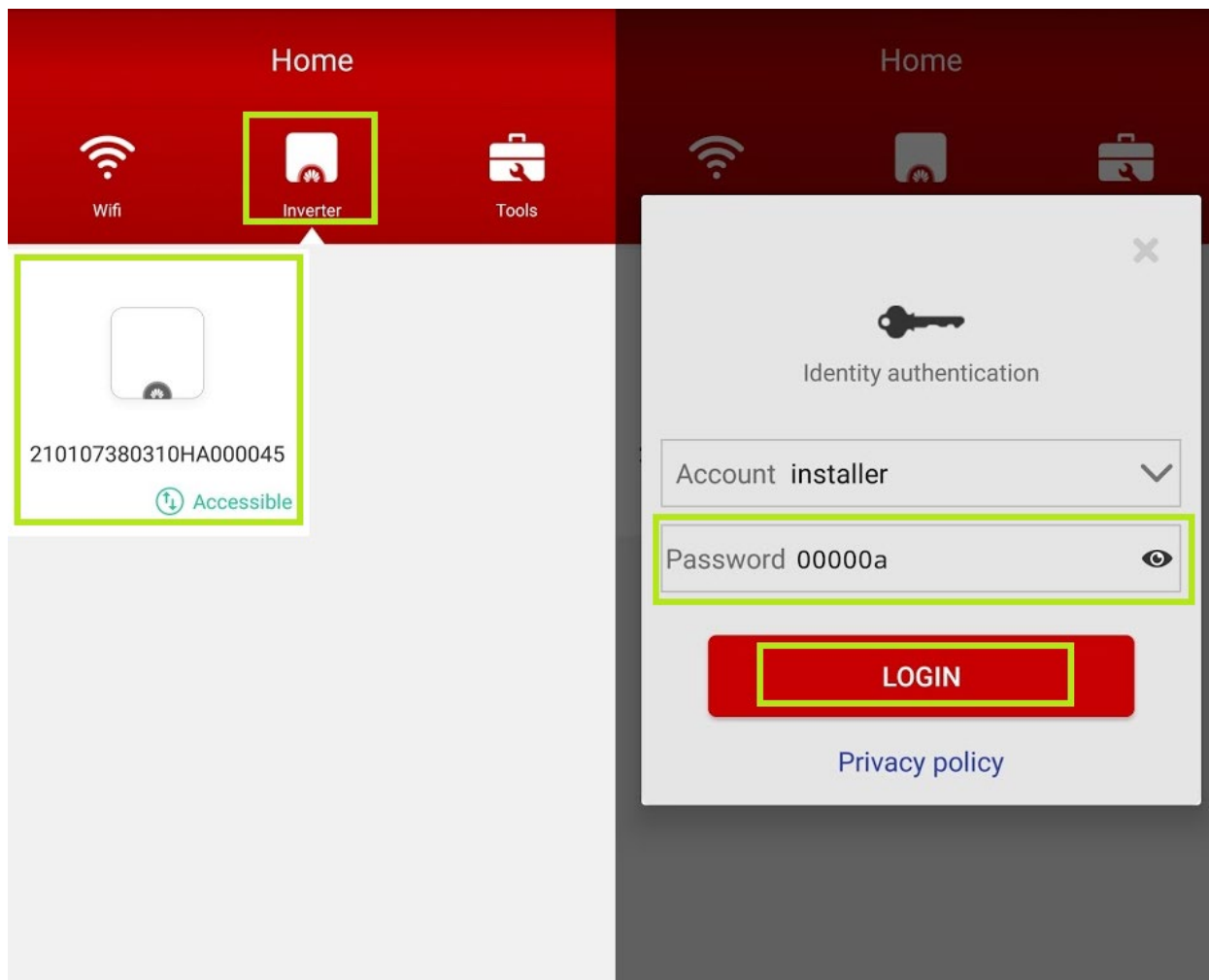
If connection to Inverter's Wi-Fi is not possible with none of the methods presented above, Turn OFF AC and DC for 30seconds and then turn it back on and try again.

If the connection is still not possible, check the Wi-Fi network list in your phone, long press on SUN2000L SSID and choose "Forget Network".

If the Wi-Fi signal is not visible, check if the antenna is properly tightened.

4. Login to the APP

On the Inverter list screen, tap the corresponding SUN2000L, select installer, enter the password, and then tap Verify. The initial password is **00000a**. Use the initial password upon first login. To ensure account security, change the password immediately after login.



Troubleshooting:

If the inverter doesn't appear as accessible the Network might have switched from Wi-Fi to Mobile.
If the installer password was changed and you've forgotten it, restart the inverter 2 times within 3 minutes (disconnect and connect the AC and DC 2 times).

5. Quick Settings

When you connect for the first time to this inverter, you'll be prompted to make the "Quick settings". If you don't finish all the steps (or skip them) next time you log in, you'll be prompted again to make the settings. If all the setting have been done but you want to do them again, go to Home Screen > Quick Settings

Step 1 – Set Parameters for the inverter to connect to the router

1. Tap first the Network and choose your Wi-Fi network and after that tap Password and set your Wi-Fi password and then select “Next”.

Quick setting
Set parameters manually for quick setting

Use saved file
Use the saved parameter file for quick setting

Step 1 Set parameters for the inverter to connect to the router

SSID
Password

Network | Home Router

Password |

Ignore Next

Quick Tips:

This step can be skipped if no connection is available.

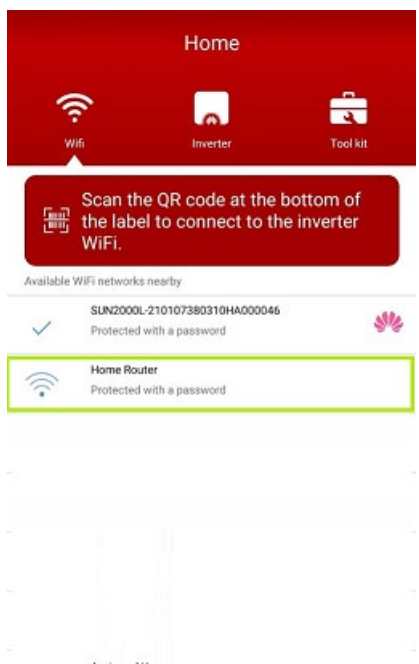
If the home router has a weak signal near the inverter, install between them a Wi-Fi extender/repeater.



2. Change connection point

From this point all the settings to your inverter can be made via your Wi-Fi router.

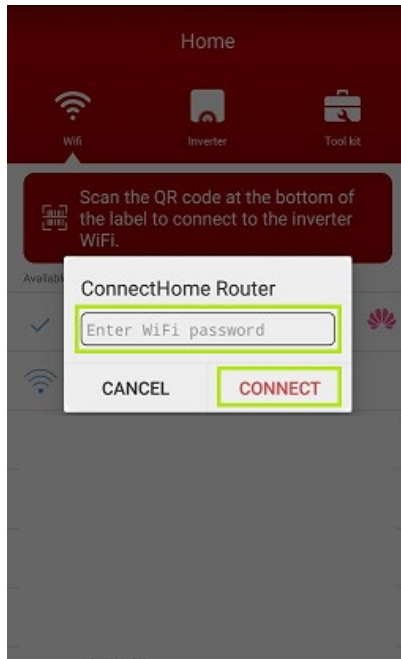
Tap “Confirm”



3. Connect to Wi-Fi router

In this step, choose from the list displayed your Wi-Fi router and tap on it.

Please make sure it's the same Wi-Fi you've selected in step 4.1

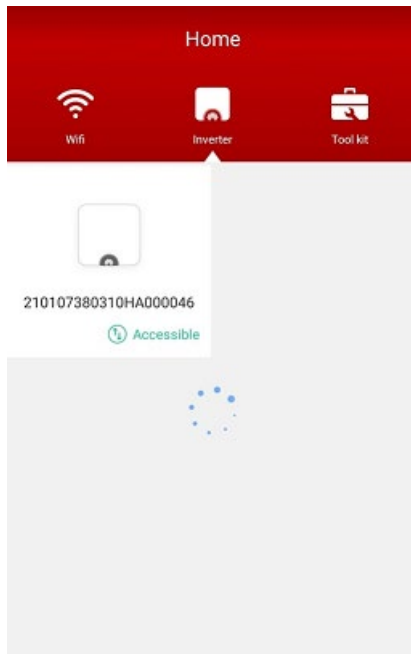


4. Wi-Fi password

This step will only appear if you don't have the Wi-Fi password saved in your phone.

Enter the password.

Tap on "Connect"

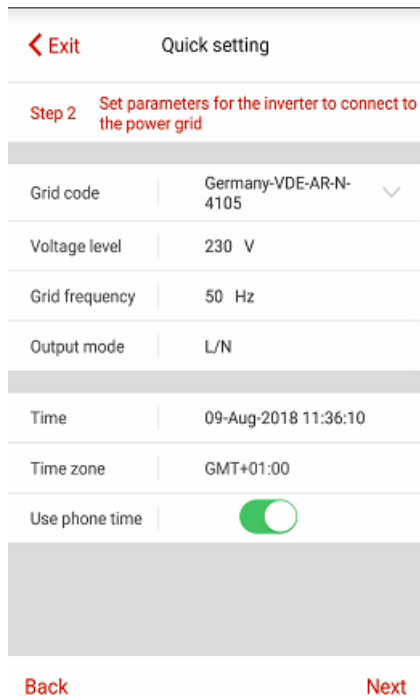


5. Connection to the inverter

If the status "Accessible" is displayed you can now connect again to the inverter.

Tap on the inverter's image.

If the status displayed is "Mobile device connected" then make sure nobody else is connected to the inverter's Wi-Fi.



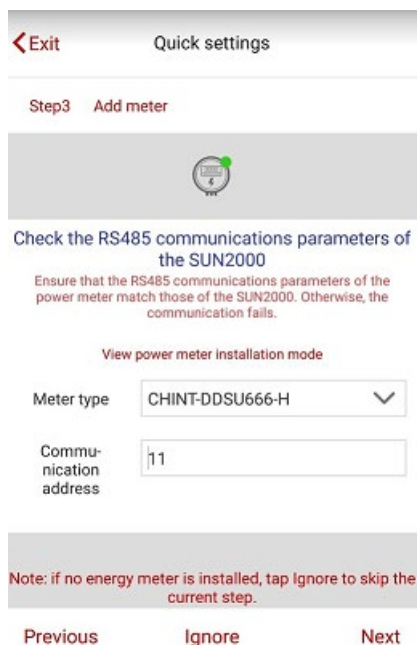
Step 2 – Set parameters for the inverter to connect to the power grid

Select the grid code that's used in your country.

If you are not sure which one to choose, please check user manual or call support team.

In order to be able to select grid code, make sure that the string voltage is higher than 120VDC.

Make sure that the "Use phone time" is enable and then select "Next"



Step 3 Add power meter (optional)

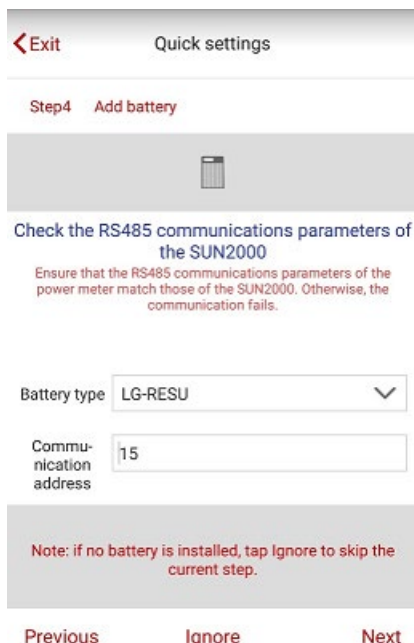
Select the power meter from the dropdown list

Check if the exact product type is selected.

Check if the installation is made correctly, by tapping on "View Power Meter Installation Mode"

If no meter is installed, tap on **Ignore**. Otherwise press **Next**.

The default communication address is set when the meter type is selected.

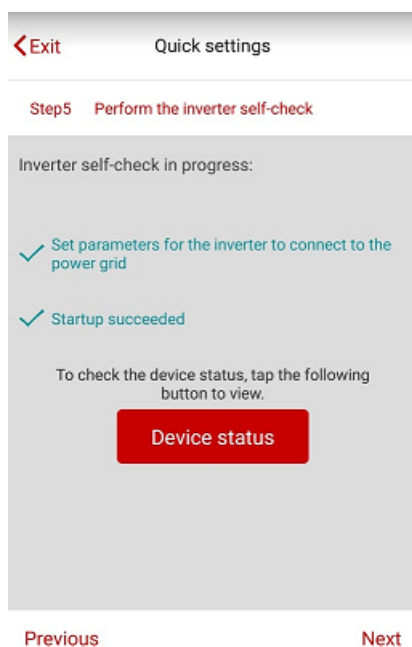


Step 4 Add Battery (optional)

Select battery type.

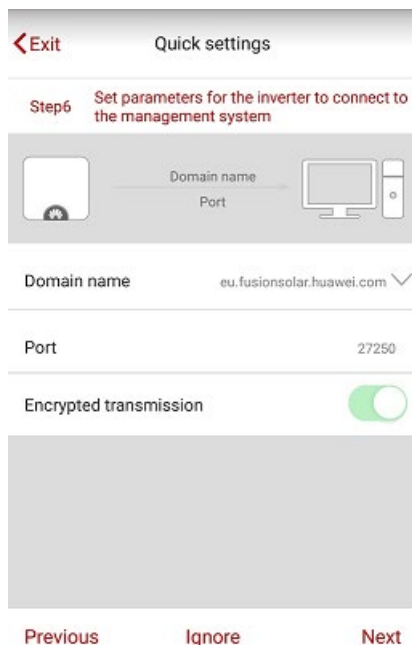
The comm. address is by default the one that was set in the battery management system.

If no battery is available press ignore, otherwise – press next.



Step 5 Perform the inverter self-check

After the 2 tests are successfully done, press **Next**.



Step 6 Set parameters for the inverter to connect to the management system

Domain name: eu.fusionsolar.huawei.com

Port: 27250

Encrypted transmission: ☒

Previous Ignore Next

Step 6 Set parameters for the inverter to connect to the management system

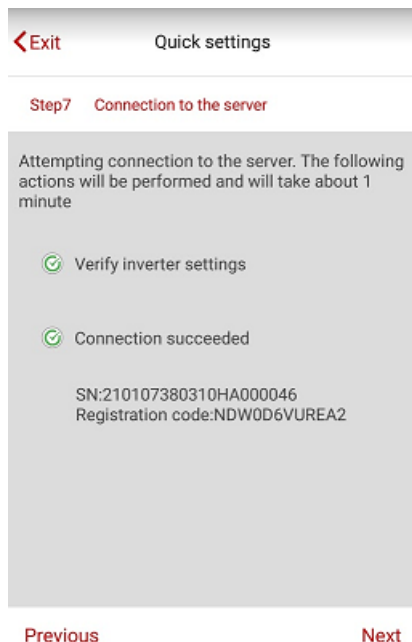
Domain name: eu.fusionsolar.huawei.com

Port number: 27250

Encrypted transmission: YES

If you don't want to monitor remotely the PV plant via NetEco platform, you can skip this step by pressing **Ignore**.

After all settings are done, press **Next**.



Step 7 Connection to the server

Attempting connection to the server. The following actions will be performed and will take about 1 minute

- Verify inverter settings
- Connection succeeded

SN:210107380310HA000046
Registration code:NDW0D6VUREA2

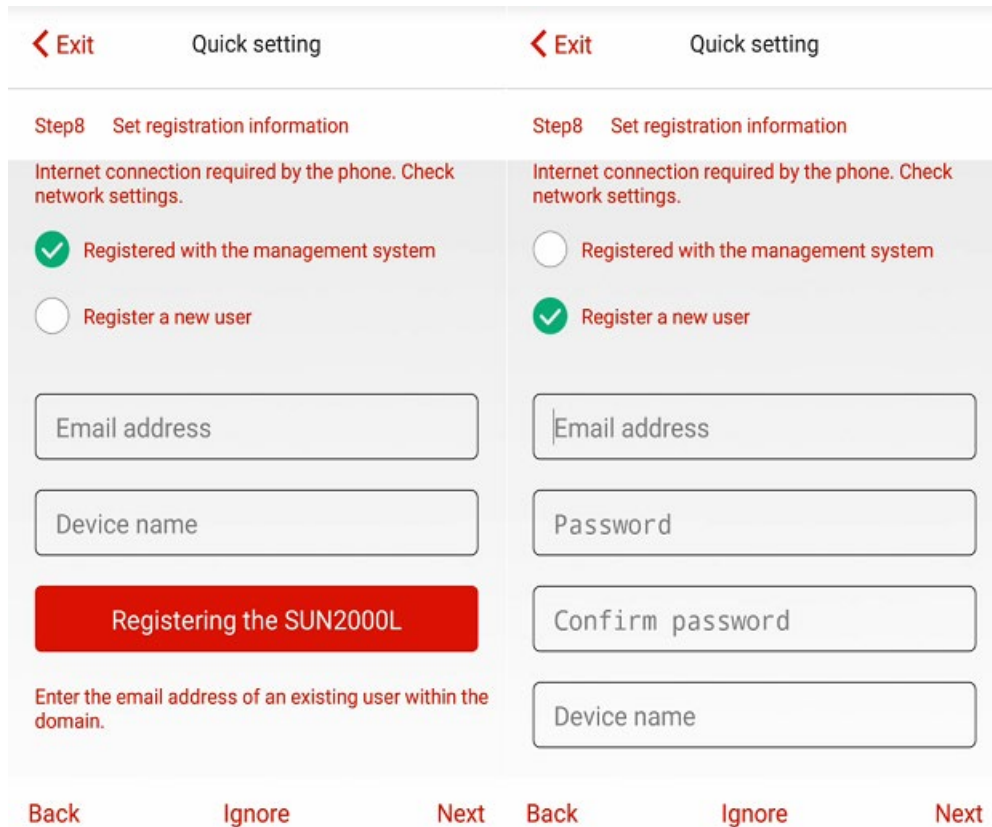
Previous Next

Step 7 Connection to the server

The inverter will check if all the requirements are checked. This process will take about 1 minute.

After all the check are done, press **Next**.

Step 8 Set registration information



Register with the management system

If you are an existing user on FusionSolar platform / NetEco select the option “Register with the management system”

Enter your email address and the device name (PV plant name).

Register a new user

If it's the first time when you access FusionSolar/NetEco platform, select the option “Register a new user”. An account will be created for you and after the commissioning is finished, you'll be able to access remotely the inverter via NetEco app or on your browser by accessing <https://eu.fusionsolar.huawei.com>

Now you can access your PV plant remotely via NetEco app.

6. Access PV plant remotely via NetEco APP

6.1 Download NetEco APP

The app is available on Android and iOS platforms.

Search for **NetEco** in one of the following app stores, download the installation package, and install the app by following the instructions.

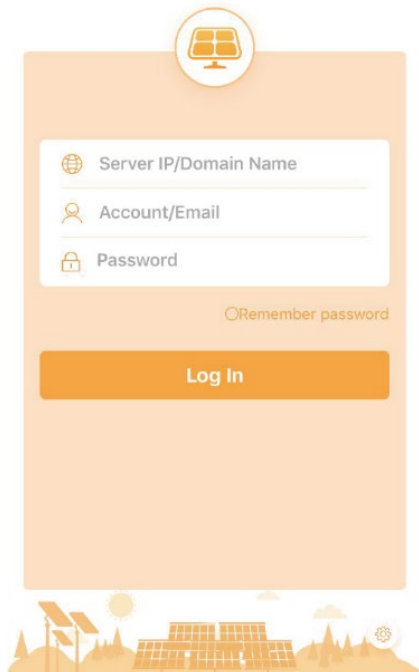
- Play Store (Android)
- App Store (iOS)
- Huawei App Store (Android)

After the app is installed, the NetEco icon is displayed on the home screen.



The monitoring portal can also be accessed from your computer by accessing the address:
<https://eu.fusionsolar.huawei.com>

6.2 Access the server



Type in your login credentials:

Server: **eu.fusionsolar.huawei.com**

Account/Email: (the one used in step 4.8)

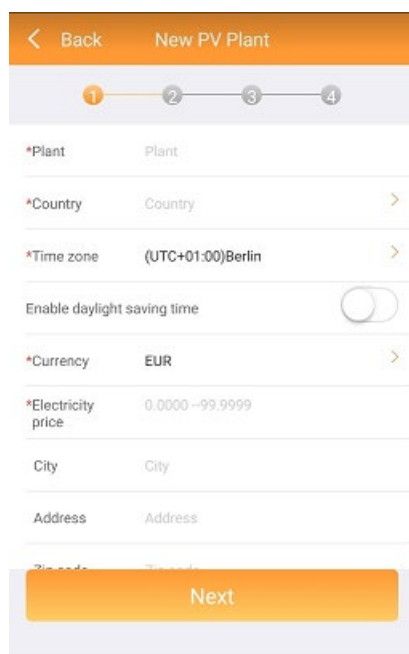
Password: (the one used in step 4.8)

Tick the “Remember password box”

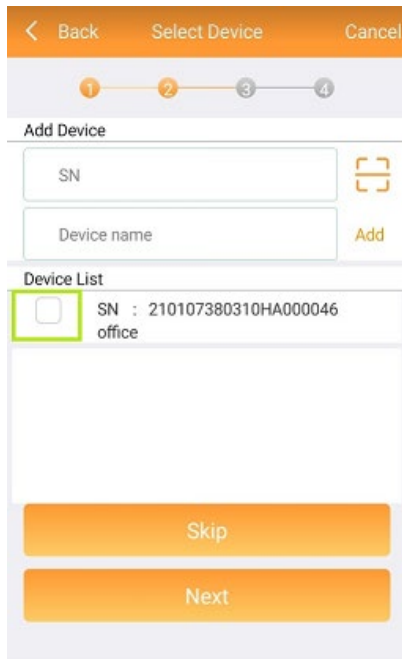


6.3 Create the PV Plant

Go to **Set** menu and tap on **New PV Plant**



Fill all the fields marked with *.
Tap **Next**.



6.4 Add device

Tick the box next to the SN.

Press **Next**.

If the SN doesn't appear automatically, then the inverter wasn't assigned to the same account used to log in the NetEco app.

If it wasn't assigned at all, you can add it manually and will become online when the commissioning is finished.



6.5 Set Device info

Enter the inverter's name and the total string capacity and press **Next**.

Configuration Successful

Finish

1

2

3

4

Plant	Huawei Romania
Country	Romania
Time zone	(UTC+02:00)Athens
Enable daylight saving time	Enable
Electricity price	0.1000
Currency	EUR
City	City
Address	Address
Zip code	Zip code

Device Information

Device name	Total string capacity
office	

6.6 Configuration Successful

After you tap on **Finish**, you can view the data from the PV Plant.

< Back

Huawei Romania

Overview

Devices

Alarms

0.297 (kW)

Current Power

0.09 (EUR)

Income

0.95 (kWh)

Daily Energy

20.35 (kWh)

Lifetime Energy

NA

Specific Energy

20.289 (kg)

CO₂ Reduction

4 (kW)

Rated power

Address: