

Vertex S

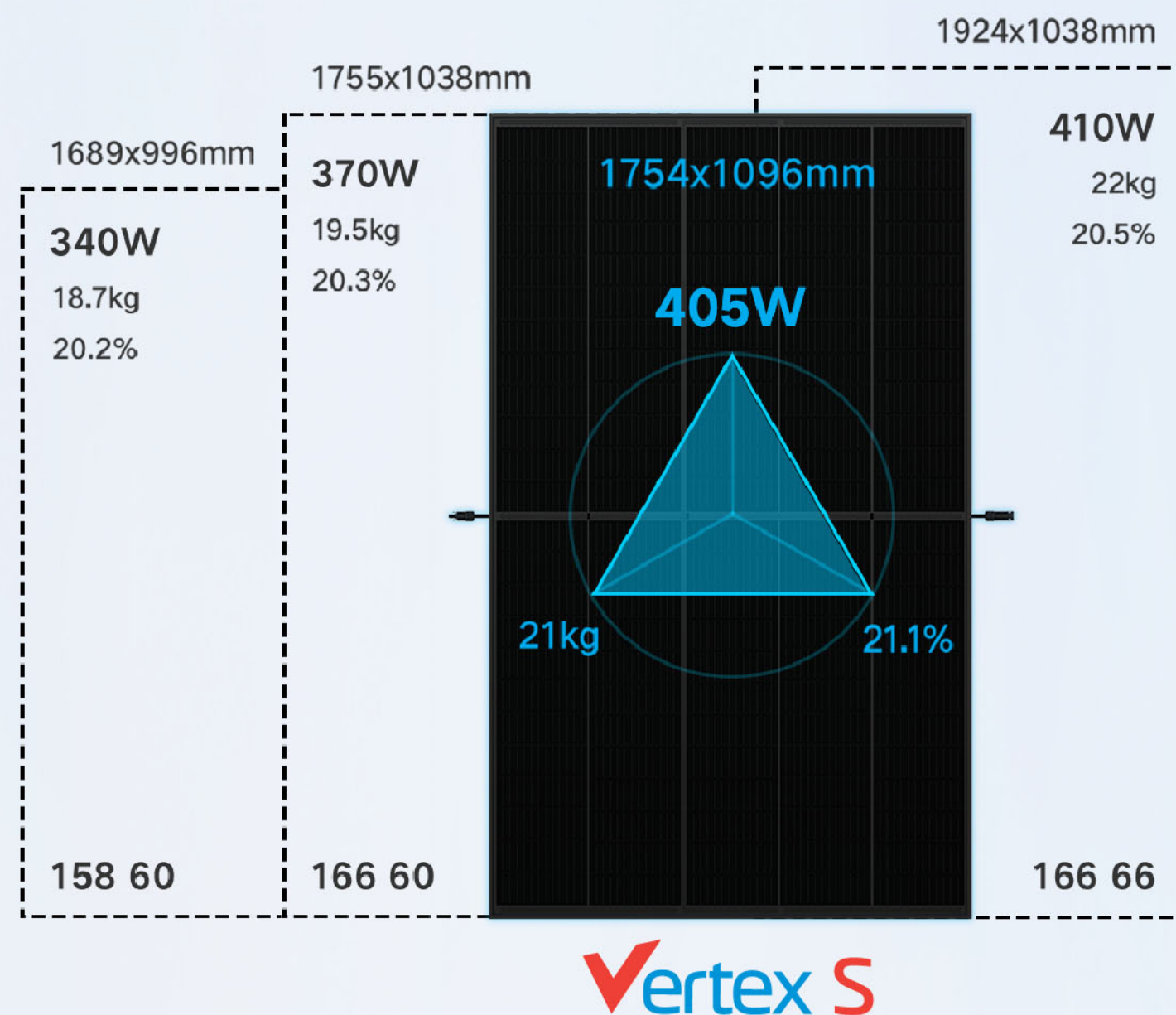
Small in Size **Big in Power**

The PV modules
you need to watch
out for in 2021

Up to
30~60W
power higher

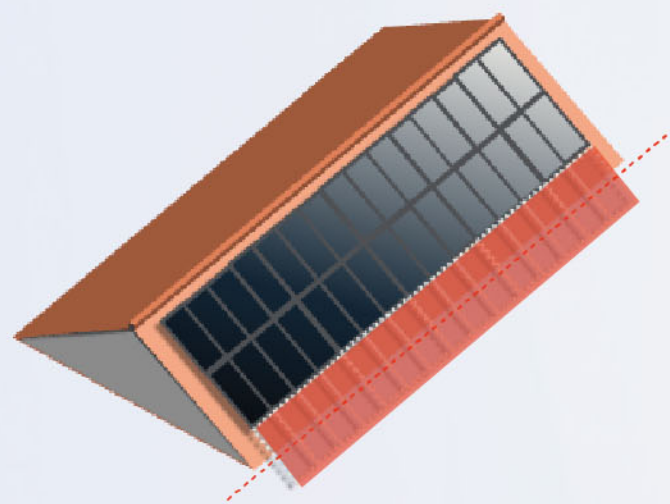


Excellent Balance between Power, Size and Weight



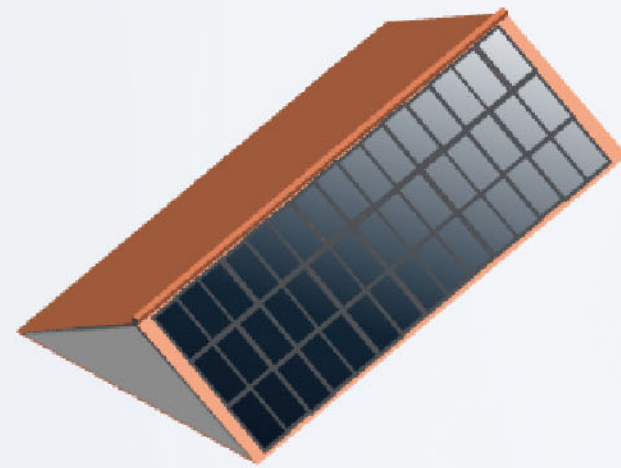
	158 60	166 60	Vertex S	166 66
Power (w)	340	370	405	410
Efficiency (%)	20.2%	20.3%	21.1%	20.5%
Weight (kg)	18.7	19.5	21	22
Length (mm)	1689	1755	1754	1924
Width (mm)	996	1038	1096	1038
Mechanical load (Pa)	5400/2400	5400/2400	6000/4000	5400/2400
Frame thickness (mm)	35	35	30	35
Per container (pcs)	780	780	936	744
Transportation Capacity (w)	265	292.5	374(+28%)	305
Warranty (Year)	12+25	12+25	15+25	12+25

More Installation, Less Cost, and High Revenue



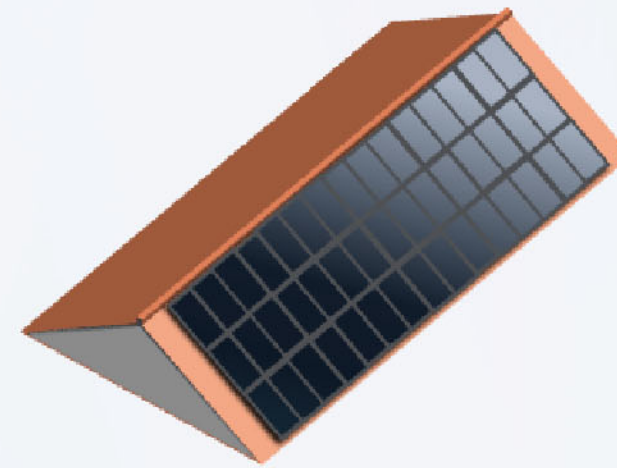
166(66) 410W

2 rows / 15 columns
12.30kW installed capacity



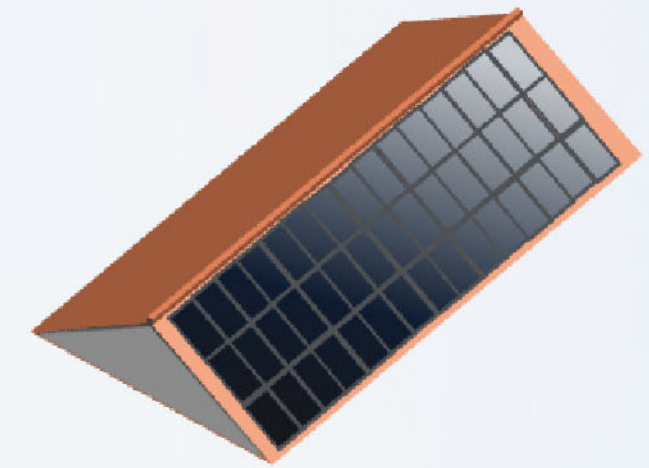
158(60) 340W

3 rows / 16 columns
16.32kW installed capacity



166(60) 370W

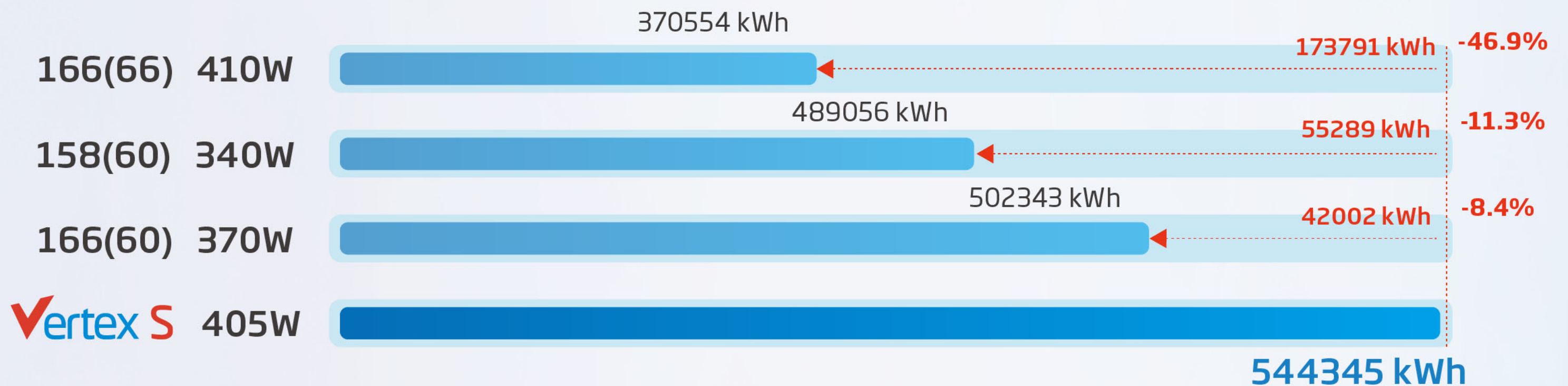
3 rows / 15 columns
16.65kW installed capacity



Vertex S 405W

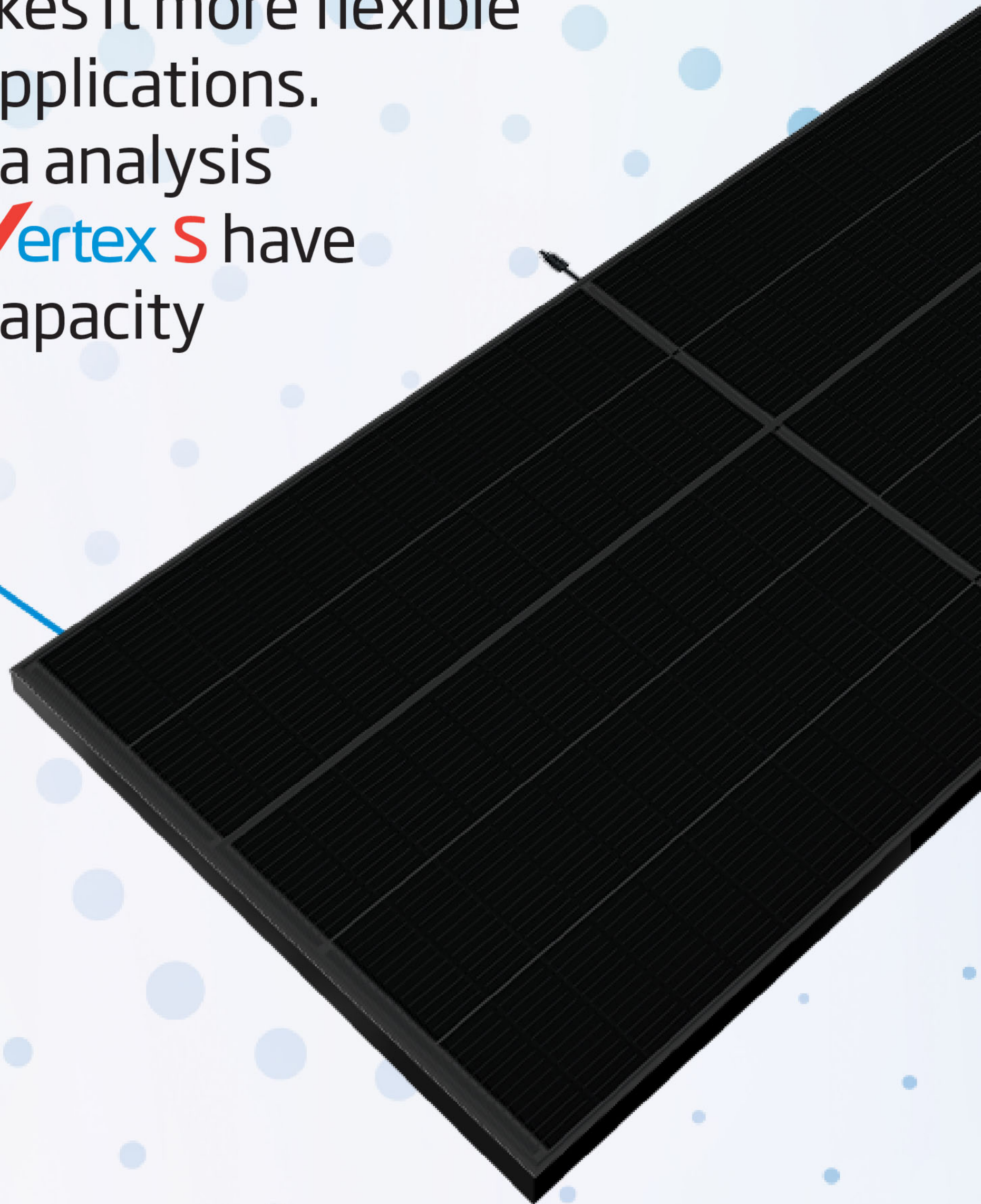
3 rows / 15 columns
18.23kW installed capacity

For 25-year power generation on a south-faced sloping rooftop with size of 16.8m x 5.5m



8.4%~46.9% higher power generation on the same rooftop

The smaller size makes it more flexible in layout for wider applications. According to big data analysis and layout design, **Vertex S** have higher installation capacity on more than **80%** rooftop situations.



Lower Cost, Higher Revenue

1c EUR/W saving in BOS

Lower initial installation cost

16% higher benefit for installer

Provide more benefit for installer

10% high revenue from user generation

Shorter payback time

30% lower in transportation cost

Lower transportation and storage costs

Capacity per semi trailer Truck (kW)

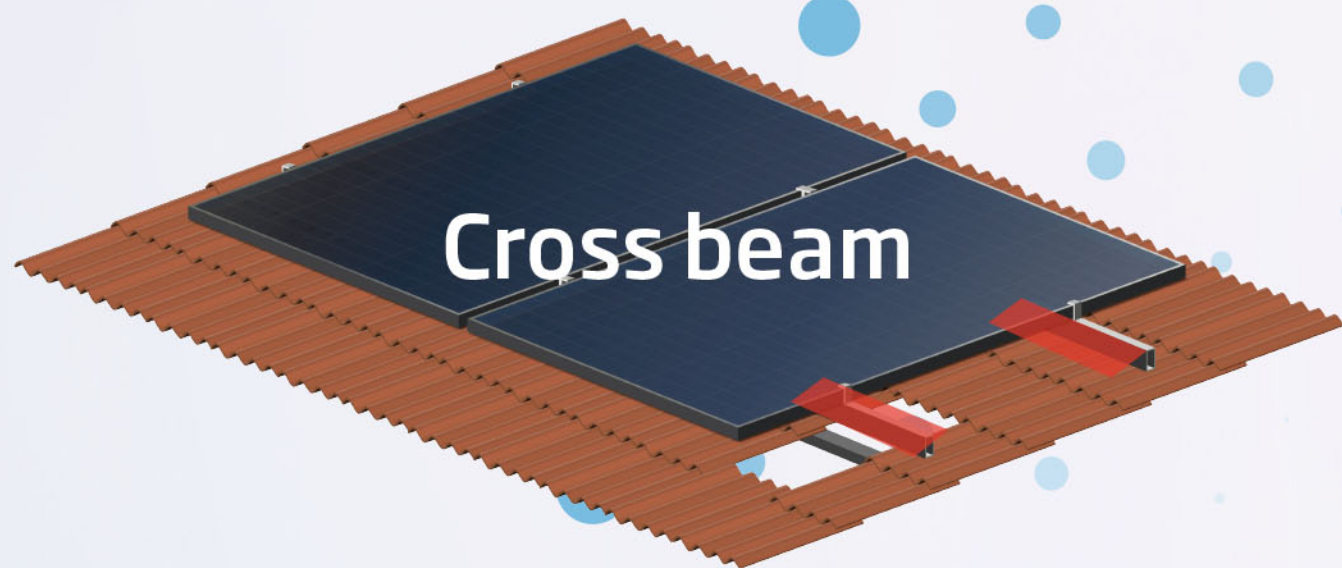
+168 pcs/Truck

CO₂

Low carbon emission
Low transportation cost



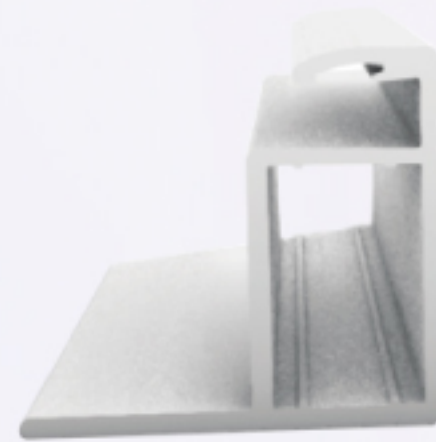
Diversified installation methods make the system more flexible



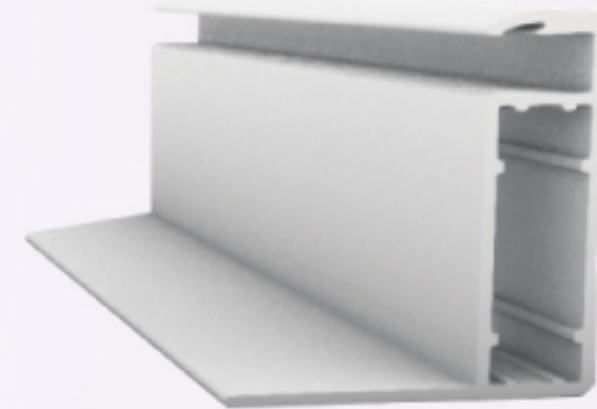
Highly Flexible, Highly Compatible



Positive mechanical load
up to **6000Pa**
with snow thickness
of **50cm***



Cross-section of
Vertex S frame(30mm)



Cross-section of
other modules frame(35mm)



Negative mechanical load
up to! **4000Pa**
with wind speed of 235km/h
(17 class hurricane)*

Better frame design for Vertex S:

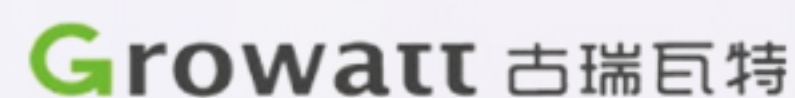
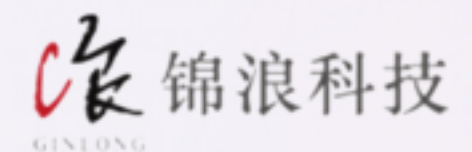
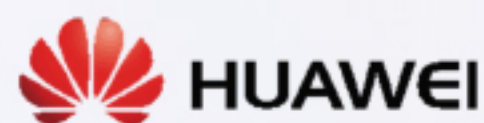
- thicker frame profile
- stronger material strength
- larger frame chamber to disperse loading pressure

Vertex S is specially designed for working at extreme weather conditions thanks to its excellent mechanical performance.

* According to IEC2016 with SF=1.5

Isc: 12.34A

Voc: 41.4V



Plug and play, no need to worry about system compatibility.

Lower degradation, higher power generation, and longer product warranty

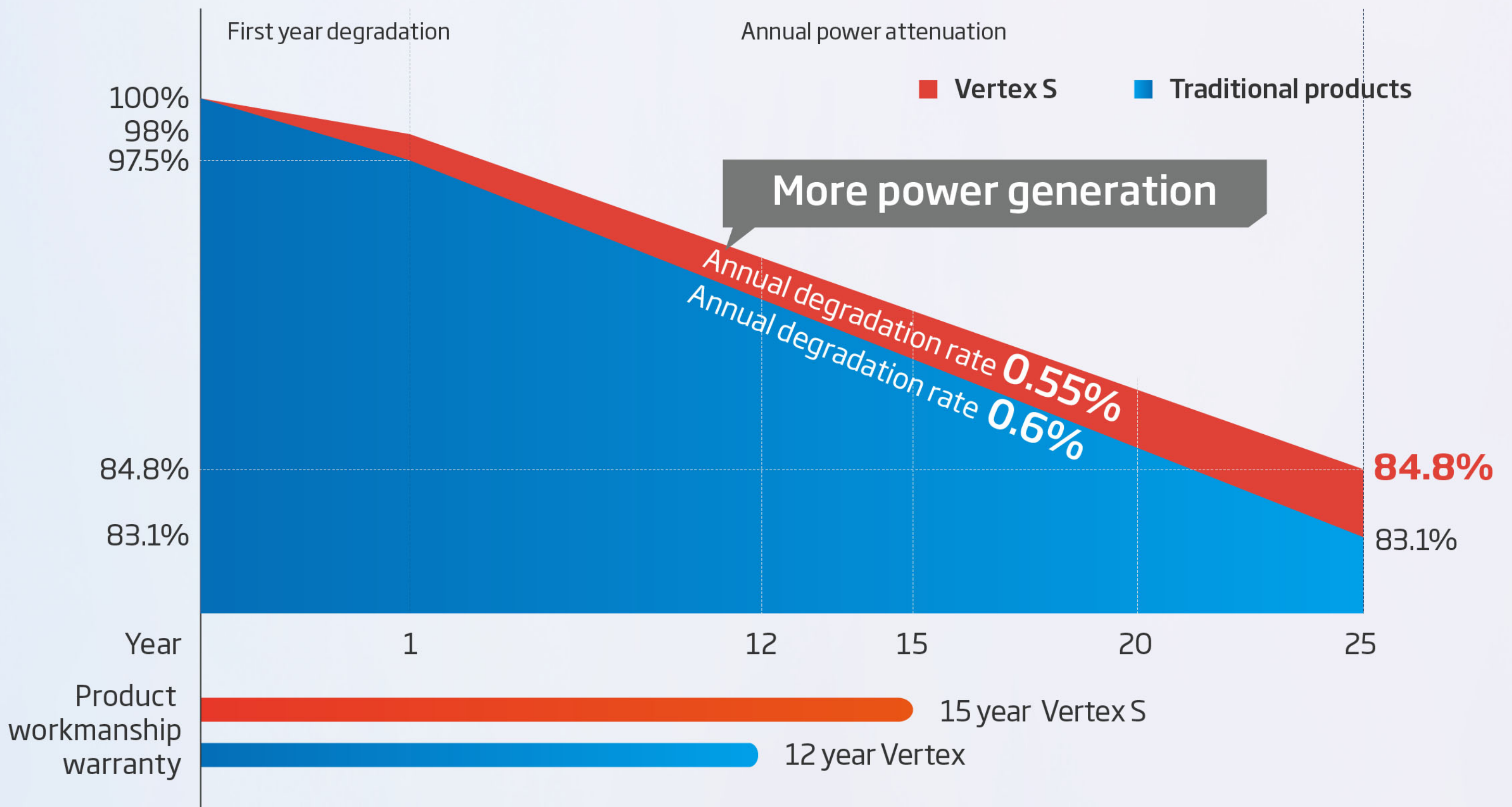
Product warranty
15year

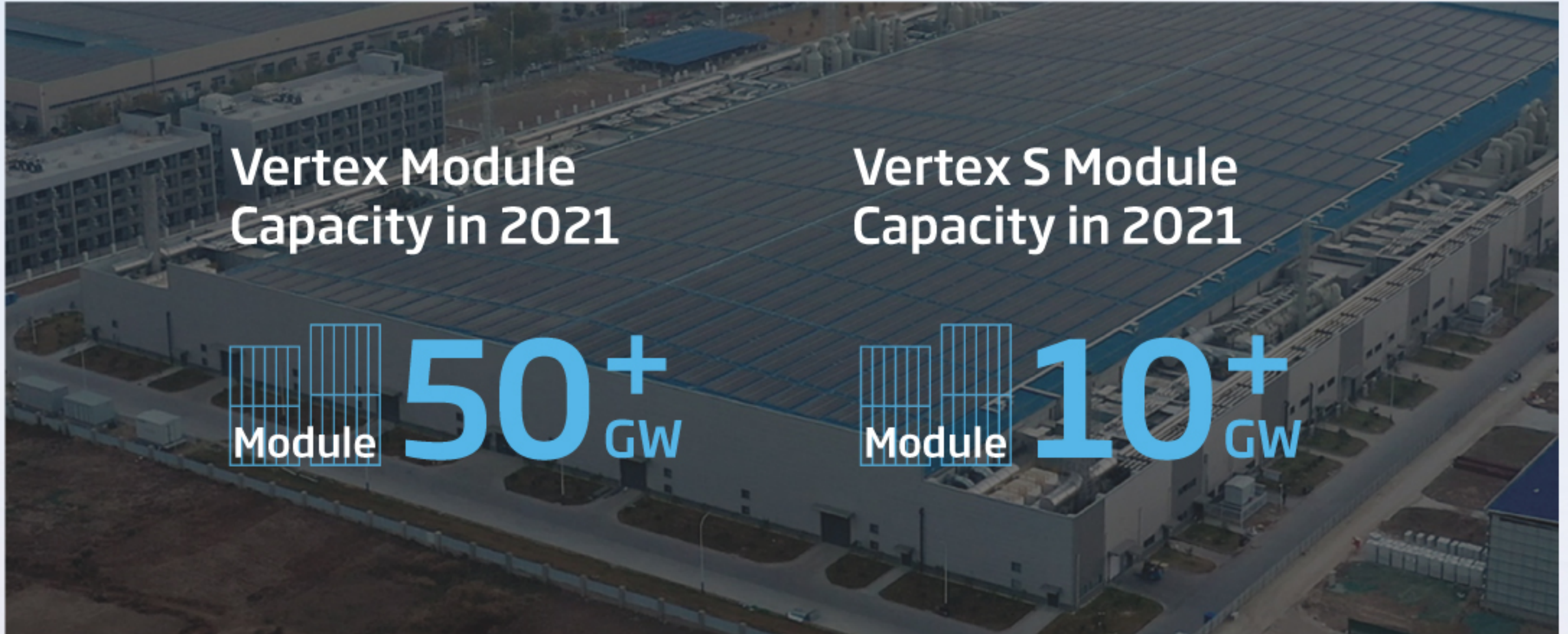
12 year warranty for standard products
(can be extended to 20 or 25 year)

First year degradation
2%

Annual power attenuation
0.55%

Power warranty
25year





Vertex



370W

450W

540W

580W

Industry

The Future From Now On, More than Bigger Power

Maximum power output

410W⁺

Maximum efficiency

21.3%⁺

- ✓ Module power increase **up to 60W**
- ✓ Power generation **increase 10~23%**
- ✓ Better performance against wind, excellent system adaption
- ✓ Lower attenuation, longer warranty, and higher revenue from power generation
- ✓ Full black aesthetics with ultimate appearance

