

**SUNGROW**  
Clean power for all

**SHRT and SBH**  
**Now compatible**

SUNGROW

# SHRT and SBH are now compatible



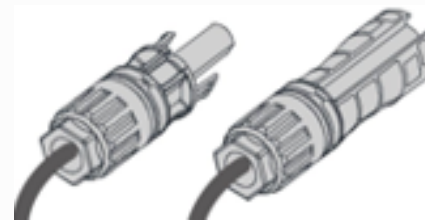
- Both existing and new SHRT inverters are now compatible with SBH battery
- SBH battery is the new default battery for SHRT inverter, ideal for all scenarios.
- Please comply to the following compatibility conditions

# Which SHRT models are compatible with SBH



All models with Jinko MC4 Battery connector

- SH5.0-6.0-8.0-10RT V112 (ASH00107)
- SH5.0-6.0-8.0-10RT -20 (ASH00132)



# Which SBH models are compatible with SHRT



- Only SBH V11 is compatible with SHRT
- SBH V12 with heating / fire extinguisher function is not compatible with SHRT
- SBH150-200-250-300-350-400 V11 are compatible
- SBH100 is not compatible with SHRT due to minimum battery voltage too low

# SHRT and SBH Charge and Discharge



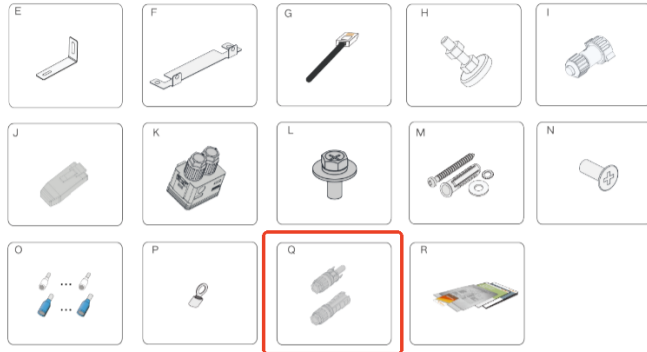
- SHRT can charge and discharge SBH with 30A DC maximum current
- SBH150 can achieve max charge and discharge 6.3kW with SHRT at nominal voltage
- Minimum battery capacity required to reach 10kW charge and discharge is SBH250

# SHRT battery cable and connector

User Manual

3 Unpacking and Storage

## Parts



Item	Name	Quantity
E	Battery fixing bracket	2

- Must use 10sqmm cable as required in SBH Manual this is mandatory for electrical safety!
- Must use the DC battery connector Jinko MC4 10sqmm included inside the SBH battery
- The battery connector inside the SHRT box cannot be used! It does not fit the 10sqmm



# SHRT and SBH FW versions

Update the FW for SHRT first and SBH afterwards to latest FW version to achieve compatibility

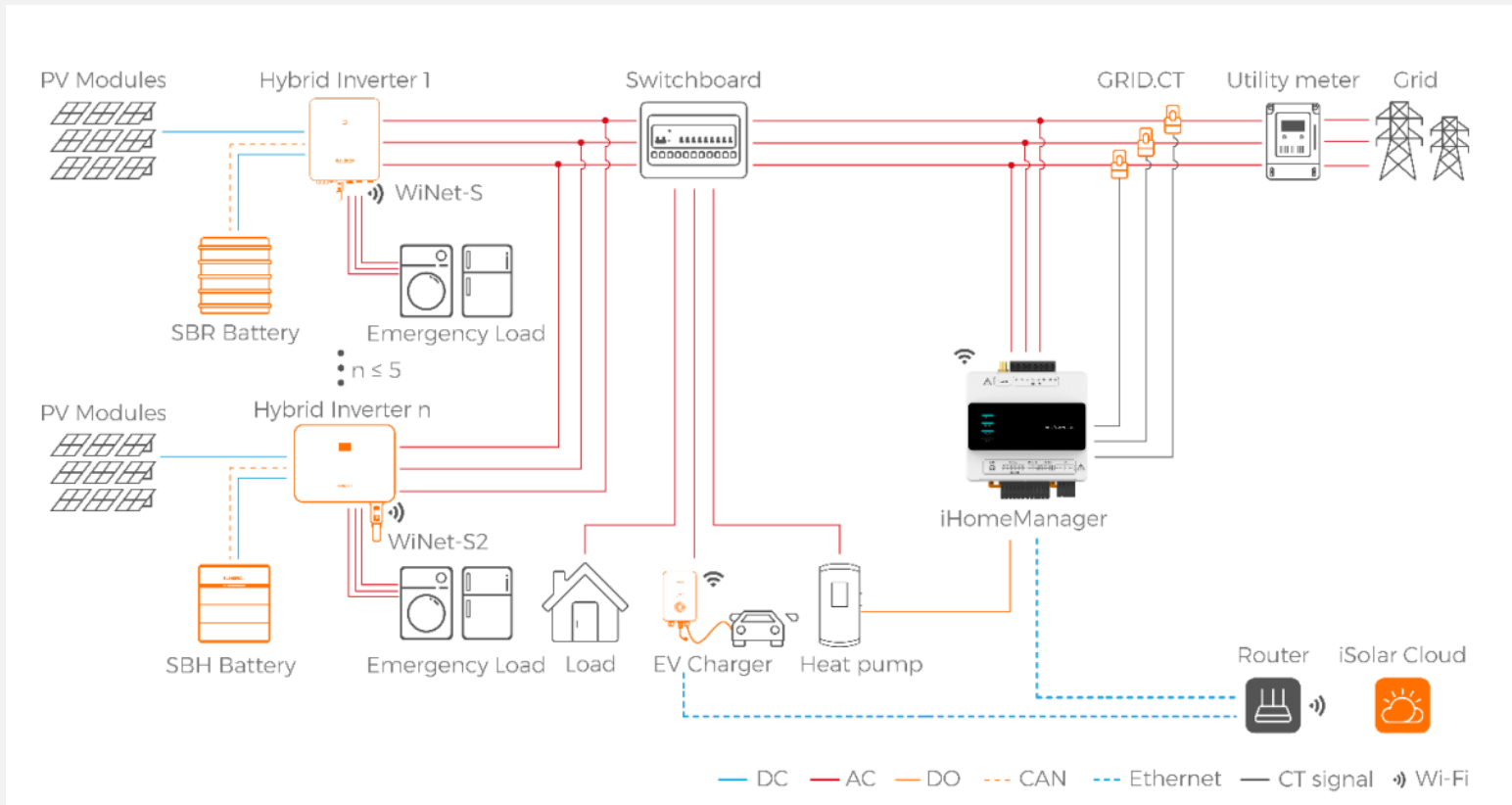
## Battery Management

Li-ion battery from SUNGROW are compatible with the PV ESS, further battery models will be made compatible in the future.

The currently supported battery brands and models are shown in the following table.

Brand	Model	Firmware Version
	SBR064	Battery: SBRBCU-S_22011.01.18 and later Inverter: SAPPHIRE-H_B001.V000.P007-20240223 and later
SUNGROW	SBR096/128/160/192/224/256	Battery: SBRBCU-S_22011.01.16 and later Inverter: SAPPHIRE-H_B000.V000.P005 and later
	SBH150/200/250/300/350	Battery: SBHBCU-S_22011.04.02 and later Inverter: SAPPHIRE-H_B001.V000.P007-20240223 and later

# System Solutions available with iHM



- For parallel installation, use iHomeManager. up to 5 SHRT can connect with iHM.
- For EV charger, use AC22E-01 or AC22G2 with iHM
- For 14a or RCR prefer to use iHM.

# SBH150-400 V11 Battery



## Modular Design

Powerful storage for your home

- Fast charging/discharging ideal for backup
- 2-hour Charge, All-night Use
- Support 10~80kWh Battery Capacity
- Easy Expansion in Future
- Efficient SOC balancing between modules
- 10 years of warranty with high energy use

**Safety  
isn't claimed  
It's proven.**

SUNGROW

# UL9540B. The Gold Standard in Safety

UL 9540B sets safety standards for residential ESS with a capacity of 20kWh or less.

It addresses not only cell-level thermal runaway control, but also gas management, thermal insulation, and structural design.



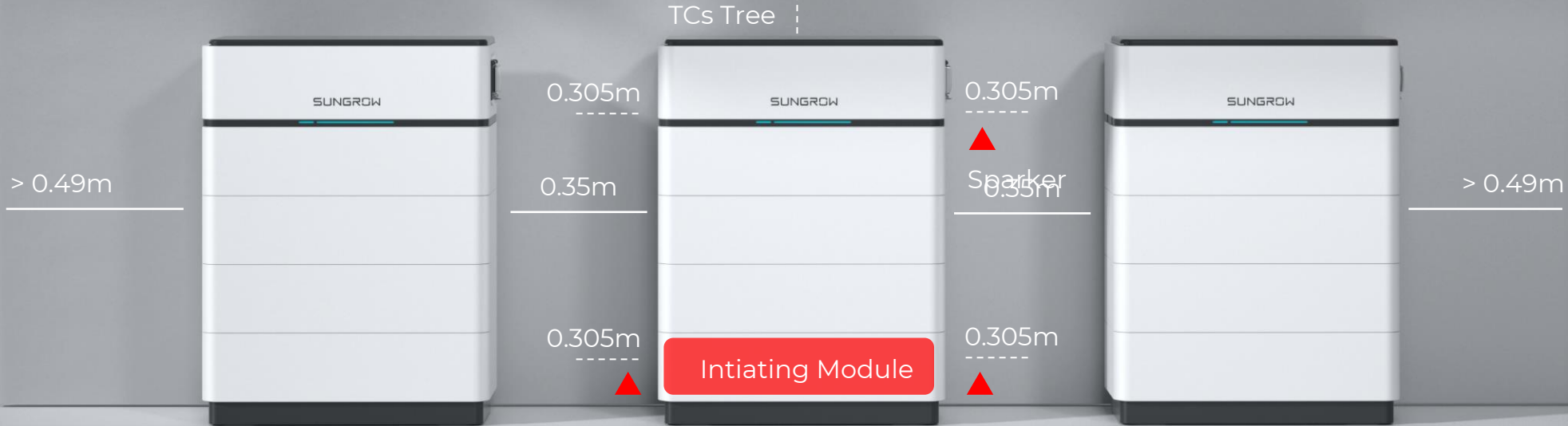
# Test Conditions

## Trigger Method

Continuous ignition on both sides to induce thermal runaway and simulate an extreme fire scenario

## Test Products

Three SBH200 batteries; Fully charged; Active fire system off



# Test Results

- ☒ No fire spread
- ☒ Open flames extinguish naturally without re-ignition
- ☒ No explosion, and the structure remains stable

